



INSTRUCTION BULLETIN

No. 9012968
Machine: T17
Published: 07-2016
Rev. 01

NOTE: DO NOT DISCARD the Parts List from the Instruction Bulletin. Place the Parts List in the appropriate place in the machine manual for future reference. Retaining the Parts List will make it easier to reorder individual parts and will save the cost of ordering an entire kit.

NOTE: Numbers in parenthesis () are reference numbers for parts listed in Bill of Materials.

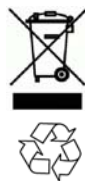
Installation instructions for **kit number 9020049 (T17 machines NA serial numbers 000000-010999 / EU serial numbers 0000-0330) / 9014964 (T17 machines NA serial numbers 011000- / EU serial numbers 0400-)**

SYNOPSIS:

This kit contains the parts needed to install a scrubbing side brush kit onto T17 scrubbers. Please follow step-by-step instructions.

SPECIAL TOOLS / CONSIDERATIONS: NONE

(Estimated time to complete: 8 hours)



PROTECT THE ENVIRONMENT

Please dispose of packaging materials, used machine components such as batteries and fluids in an environmentally safe way according to local waste disposal regulations.

Always remember to recycle.

PREPARATION:

1. Completely empty both the solution tank and the recovery tank.

FOR SAFETY: Before leaving or servicing machine, stop on level surface, turn off machine, set parking brake, and remove key.

2. Disconnect the battery cable from the machine.



WARNING: Always disconnect battery cables from machine before working on electrical components.

FOR SAFETY: When servicing machine: block machine tires before jacking machine up, jack machine up at designated locations only. (support machine with jack stands), use hoist or jack that will support the weight of the machine.

NOTE: Refer to MACHINE JACKING in the MAINTENANCE section of Operators Manual for additional information pertaining to safely jacking up the machine.

INSTALLATION:

1. Remove parts and components necessary to install the scrubbing side brush assembly onto the machine.
2. Assemble the scrubbing side brush assembly onto the machine referencing the parts illustrations and electrical schematics.
3. Reassemble all parts removed to install the scrubbing side brush back onto the machine.
4. Reconnect the battery cable to the machine.
5. Start and test the machine. Operate the scrubbing side brush to ensure it is functioning properly. Check hose / fitting connections for leaks.

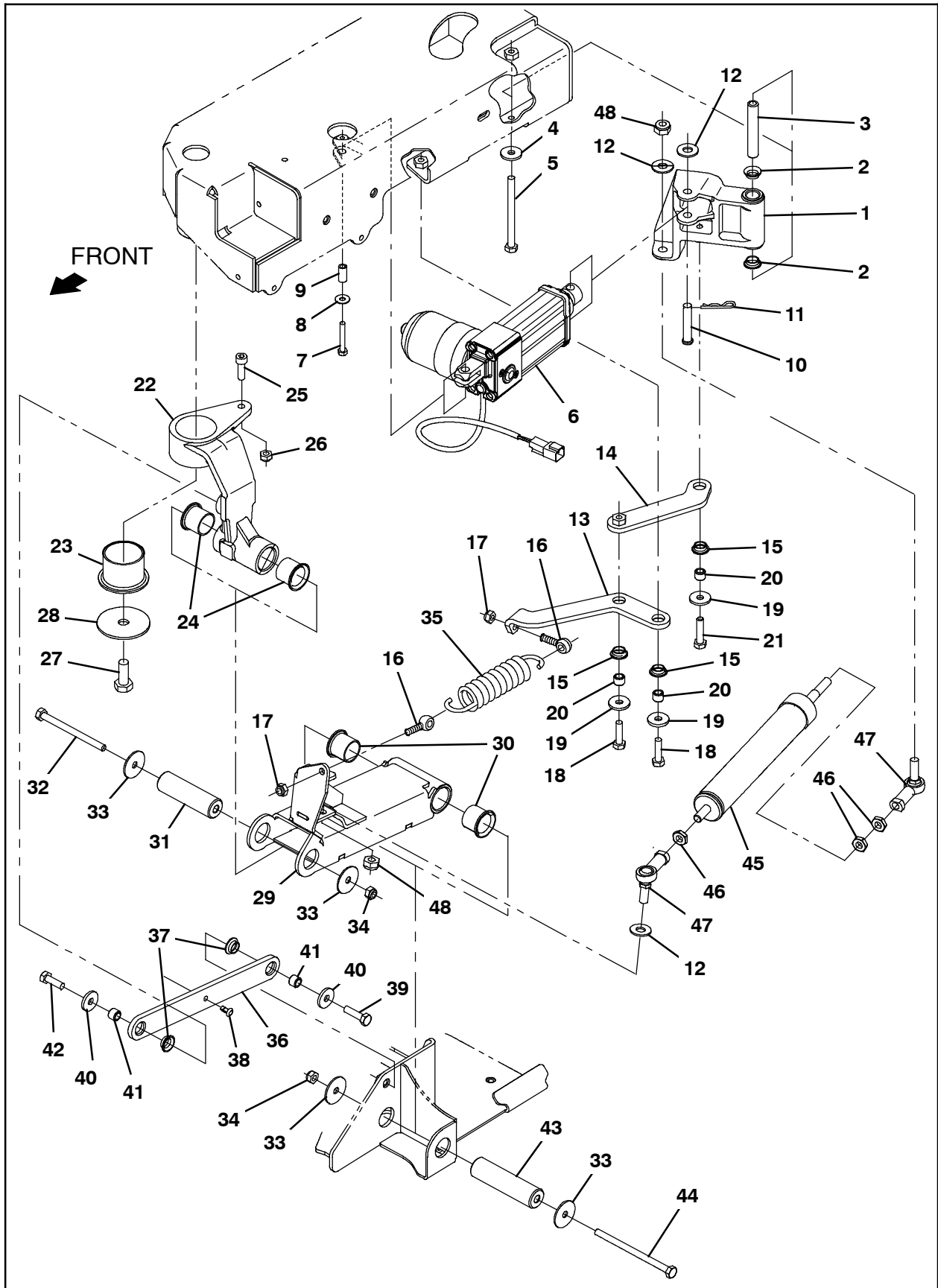


FIG. 1 - Scrubbing Side Brush Lift Group

FIG. 1 - Scrubbing Side Brush Lift Group

	Ref.	Tennant Part No.	Description	Qty.
▽	1	9020268	Pivot Arm Kit, Act, Sba, Afmkt [T17]	1
▲	2	1054662	Bushing, FIng, 0.50b 0.59d 0.25l	2
▲	3	1206723	Sleeve, P/M, 0.32b 0.50d 3.03l	1
	4	1017218	Washer, Flat, 0.32b 1.00d .12, SS	1
	5	386299	Screw, Hex, M8 X 1.25 X 100, SS	1
	6	1201500	Actuator, 36vdc, 2.75strk, 450lb	1
	7	33930	Screw, Hex, M6 X 1.00 X 40, SS	1
	8	01684	Washer, Flat, 0.27b 0.69d .05, SS	1
	9	1206722	Sleeve, P/M, 0.25b 0.38d 0.8l	1
	10	29584	Pin, Clevis, 0.37d X 2.00l	1
	11	44906	Pin, Cotter, Hair, 0.38d .093 Wir	1
	12	01686	Washer, Flat, 0.44b 1.00d .08, SS	3
	13	1206422	Arm, Spring, Tensioner	1
	14	1206602	Arm Wldt, Spring, Tension	1
	15	1054662	Bushing, FIng, 0.50b 0.59d 0.25l	3
	16	69998	Bolt, Eye, M8 X 1.25 X 030mm, 08.00 Eye	2
	17	08713	Nut, Hex, Lock, M8 X 1.25, NI, SS	2
	18	09011	Screw, Hex, M8 X 1.25 X 30, SS	2
	19	1017218	Washer, Flat, 0.32b 1.00d .12, SS	3
	20	1207656	Sleeve, P/M, 0.32b 0.50d 0.4l [430ss]	3
	21	59658	Screw, Hex, M8 X 1.25 X 35, NI, SS	1
▽	22	9011054	Pivot Arm Kit, SBA, Afmkt [T12]	1
▲	23	1201101	Bushing, FIng, 1.75b 1.94d 1.50l	1
▲	24	54618	Bushing, FIng, 1.00b 1.13d 1.00l	2
▲	25	39308	Screw, Soc, M8 X 1.25 X 25, 12.9	1
▲	26	08713	Nut, Hex, Lock, M8 X 1.25, NI, SS	1
	27	12309	Screw, Hex, M12 X 1.75 X 30, SS	1
	28	1200634	Washer, Flat, 0.48b 2.50d .12, SS	1
▽	29	9020248	Channel Assy, Lift, Sba, Afmkt [T17] (Kit 9020049 Only)	1
▲	30	54618	Bushing, FIng, 1.00b 1.13d 1.00l	2
▽	29	9014996	Channel Assy, Lift, Sba, Afmkt [T17] (Kit 9014964 Only)	1
▲	30	54618	Bushing, FIng, 1.00b 1.13d 1.00l	2
	31	1210581	Pin, Pivot, SBA	1
	32	386299	Screw, Hex, M8 X 1.25 X 100, SS	1
	33	1011719	Washer, Flat, 0.33b 1.38d .08, SS	4
	34	08713	Nut, Hex, Lock, M8 X 1.25, NI, SS	2
	35	1031413	Spring, Extn, 1.68od 0.20wir 07.5l	1
▽	36	9020249	Link Kit, Upper, Sba, Afmkt [T17]	1
▲	37	1054662	Bushing, FIng, 0.50b 0.59d 0.25l	2
	38	1210807	Wire, Tie [W/.25" Fir Tree Clip]	1
	39	09011	Screw, Hex, M8 X 1.25 X 30, SS	1
	40	1017218	Washer, Flat, 0.32b 1.00d .12, SS	2
	41	1207656	Sleeve, P/M, 0.32b 0.50d 0.4l [430ss]	2
	42	09010	Screw, Hex, M8 X 1.25 X 25, SS	1
	43	1209678	Pin, Pivot, SBA	1
	44	1210312	Screw, Hex, M8 X 1.25 X 120, SS	1
▽	45	9010938	Spring Assy, Replmt, Afmkt [T12]	1
▲	46	763064	Nut, Hex, Jam, M10 X 1.5, [Din439]	3
▲	47	05686	Rod- End, M10 X 1.5rh Fem M10 X 1.5stud	2
▲	48	08714	Nut, Hex, Lock, M10 X 1.5, NI, SS	2

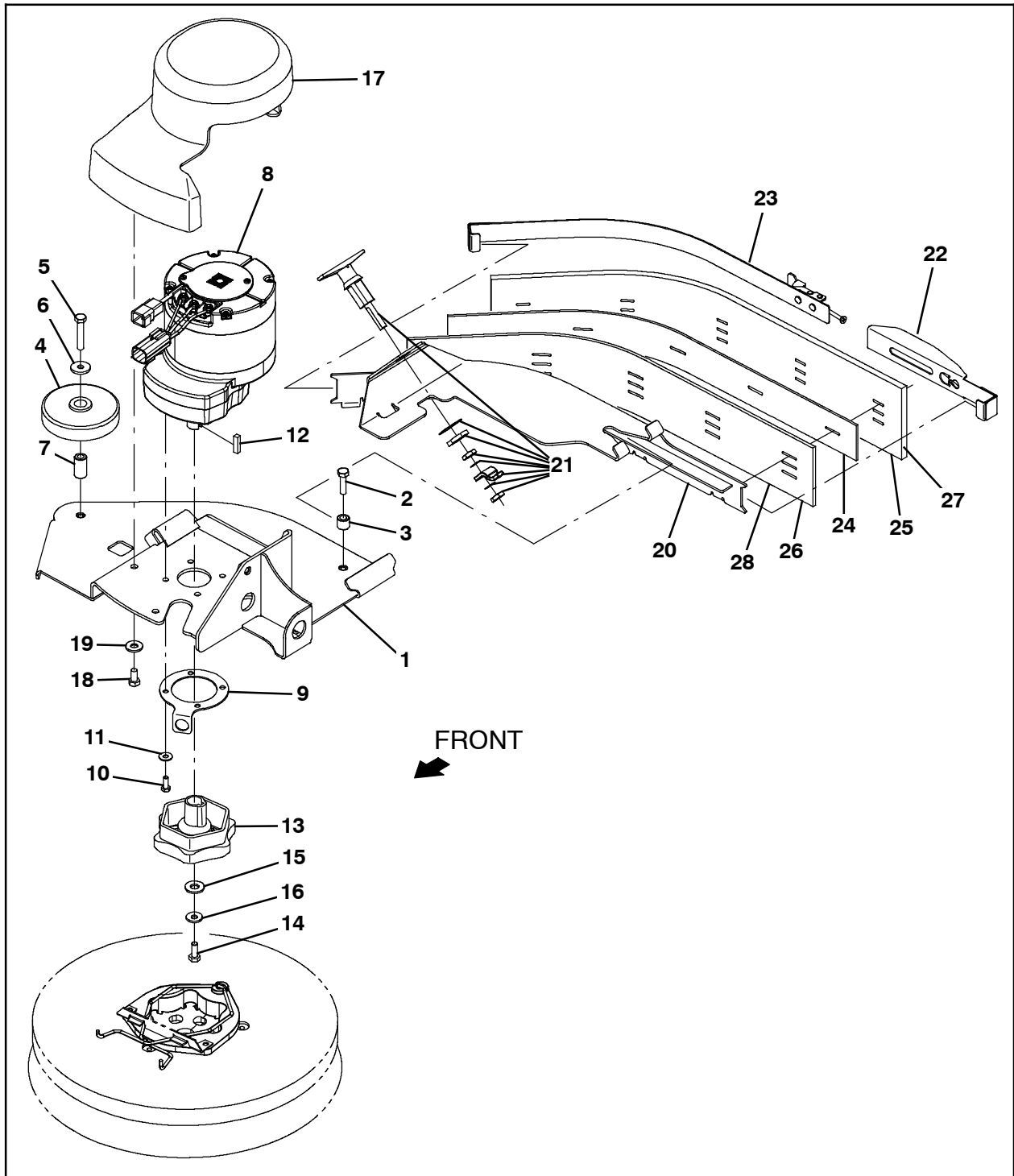


FIG. 2 - Scrubbing Side Brush Motor and Squeegee Group

FIG. 2 - Scrubbing Side Brush Motor and Squeegee Group

Ref.	Tennant Part No.	Description	Qty.	
1	1205307	Bracket Wldt, Deck	1	
2	09011	Screw, Hex, M8 X 1.25 X 30, SS	1	
3	80409	Sleeve, P/M, 0.34b 0.63d 0.6l, Bnz	1	
4	363162	Wheel, 04.0d 0.89w 0.64b	1	
5	222505	Screw, Hex, M8 X 1.25 X 45, SS	1	
6	1017218	Washer, Flat, 0.32b 1.00d .12, SS	1	
7	363301	Sleeve, P/M, 0.34b 0.63d 1.2l, Bnz	1	
8	1206475	Motor, Ele, 36 Vdc, 350 Rpm 1.25 Hp Gear	1	
9	1207718	Plate, Sppt	1	
10	11329	Screw, Hex, M6 X 1.00 X 16, NI, SS	4	
11	01684	Washer, Flat, 0.27b 0.69d .05, SS	4	
12	00928	Key, Sq, 0.25 X 0.25, 1.00l	1	
13	377364	Hub, Drive, Brush, Disk, 0.75b [6t]	1	
14	12273	Screw, Hex, M8 X 1.25 X 20, NI, SS	1	
15	01686	Washer, Flat, 0.44b 1.00d .08, SS	1	
16	41186	Washer, Flat, Belleville, .31	1	
17	9020217	Cover, Motor, SBA, Afmkt[T17]	1	
18	15675	Screw, Hex, M8 X 1.25 X 16, SS	2	
19	01685	Washer, Flat, 0.38b 0.88d .08, SS	2	
▽	9020247	Squeegee Assy, SBA, Afmkt [T17]	1	
▲	20	1206597	Bracket Wldt, Sqge, SBA	1
▲	21	1201149	Latch, Compression, Sqge, SBA	1
▲	22	1201609	Retainer Wldt, Sqge, SBA	1
▲	23	1206592	Retainer Wldt, Sqge, SBA	1
▲	24	1206598	Spacer, Blade	1
▲	25	1206589	Blade, Sqge, SBA, Linatex	1
▲	26	1206599	Blade, Sqge, SBA, Inner	1
	27	1212163	Blade, Sqge, SBA, (Urethane)	1
	27	1212210	Blade, Sqge, SBA, (Gum Rubber)	1
	28	1212211	Blade, Sqge, SBA, Inner, (Urethane)	1
	28	1212212	Blade, Sqge, SBA, Inner, (Gum Rubber)	1

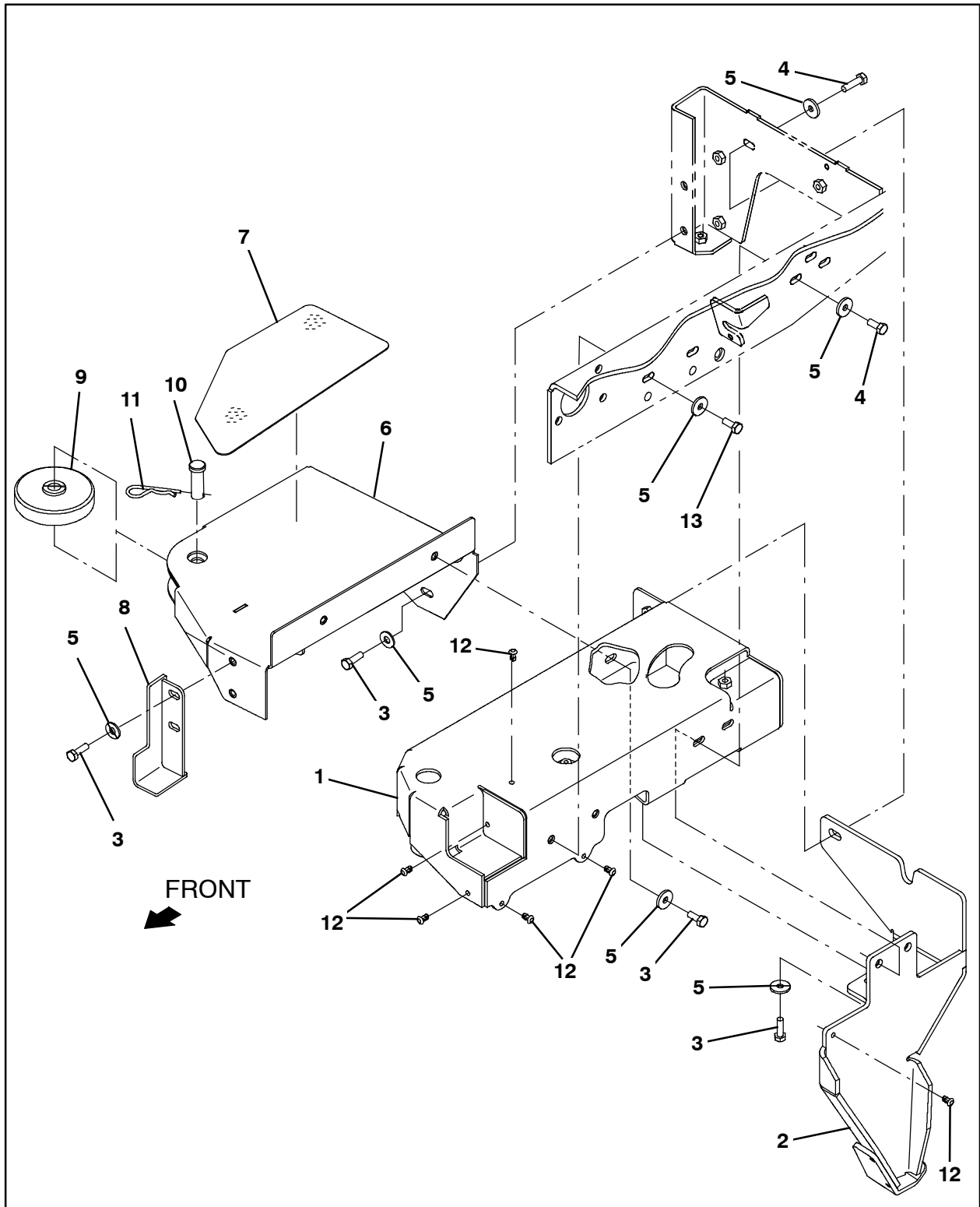


FIG. 3 - Scrubbing Side Brush Mount Group

FIG. 3 - Scrubbing Side Brush Mount Group

Ref.	Tennant Part No.	Description	Qty.
1	1205299	Cover Wldt, SBA (Kit 9020049 Only)	1
1	1222170	Cover Wldt, SBA (Kit 9014964 Only)	1
2	1206805	Bracket Wldt, Skid, Anti- Roll (Kit 9020049 Only)	1
2	1225419	Bracket Wldt, Skid, Anti- Roll (Kit 9014964 Only)	1
3	09010	Screw, Hex, M8 X 1.25 X 25, SS	6
4	09011	Screw, Hex, M8 X 1.25 X 30, SS	3
5	1017218	Washer, Flat, 0.32b 1.00d .12, SS	12
6	1206809	Bracket Wldt, Step, SBA	1
7	1207657	Tread, Non- Skid- Step, 6.3w 12.8l, SBA	1
8	1208021	Door Wldt, Mtg, SBA	1
9	363162	Wheel, 04.0d 0.89w 0.64b	1
10	1207866	Pin, Clevis, 0.625d X 1.75l	1
11	55094	Pin, Cotter, Hair, 0.75d .148 Wir	1
12	1071085	Clip, Tie, 0.25d, Plstc	6
13	09740	Screw, Hex, M8 X 1.25 X 20, SS	2

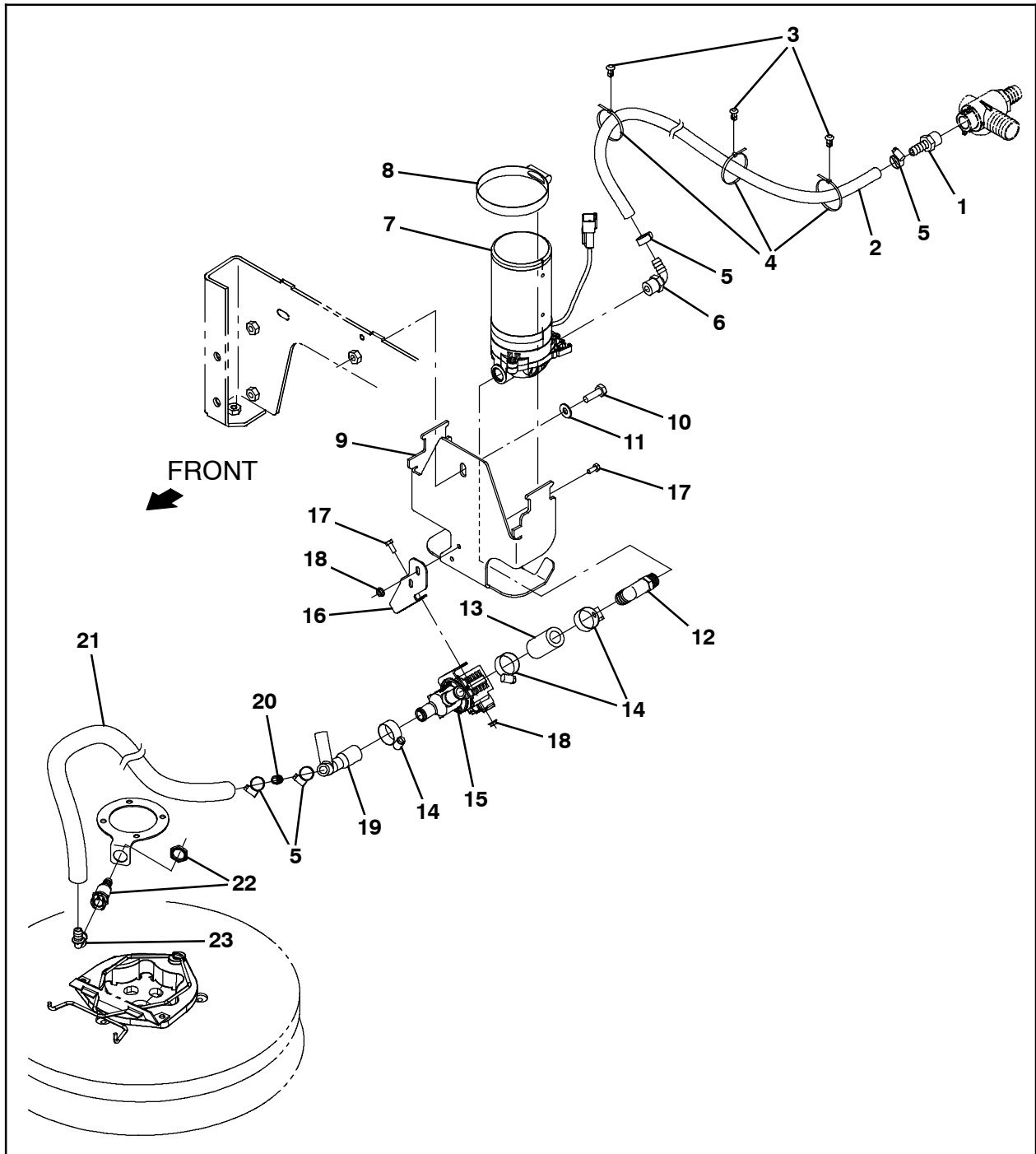


FIG. 4 - Scrubbing Side Brush Solution Supply Group

FIG. 4 - Scrubbing Side Brush Solution Supply Group

Ref.	Tennant Part No.	Description	Qty.
1	150538	Fitting, Plstc, Str, Bm06/Pm06	1
2	1006400	Hose, Afmkt, PVC, Brd, 0.38id, 03ft, Clr	1
3	1071085	Clip, Tie, 0.25d, Plstc	3
4	130773	Tie, Cable, Nyl, 11.0l, .14w, 3.0 Max. D	3
5	43844	Clamp, Hose, Wormdrive, 0.25- 0.62d, .31w	4
6	1005630	Fitting, Plstc, E90, Bm06/Pm06, Nyl	1
7	1200328	Pump, Soltn, Ele, 36vdc, 60psi	1
8	43555	Clamp, Hose, Wormdrive, 2.62- 3.50d	1
9	1206138	Bracket, Pump (Kit 9020049 Only)	1
9	1221952	Bracket, Pump (Kit 9014964 Only)	1
10	09010	Screw, Hex, M8 X 1.25 X 25, SS	1
11	32490	Washer, Flat, 0.25, Std	1
12	1208433	Fitting, Plstc, E90, Bm10/Pm06	1
13	1015025	Hose, Afmkt, PVC, Brd, 0.62id, 02ft, Clr	1
14	63810	Clamp, Hose, Wormdrive, 0.56- 1.06d, .56w	3
15	1054795	Valve, Water, Solenoid, 36vdc Bm12/Bm12	1
16	1208434	Bracket, Mount, SBA Valve	1
17	09738	Screw, Hex, M5 X 0.80 X 12, SS	4
18	07789	Nut, Hex, Flng, M5 X 0.80	4
19	1208432	Manifold, SBA	1
20	20950	Fitting, Plstc, Str, Bm06/Bm06	1
21	1014976	Hose, Afmkt, PVC, Brd, 0.38id, 08ft, Clr	1
22	1207865	Fitting, Plstc, Str, Bm06, Cplg Fem	1
23	1207864	Fitting, Plstc, E90, Bm06, Cplg Male	1

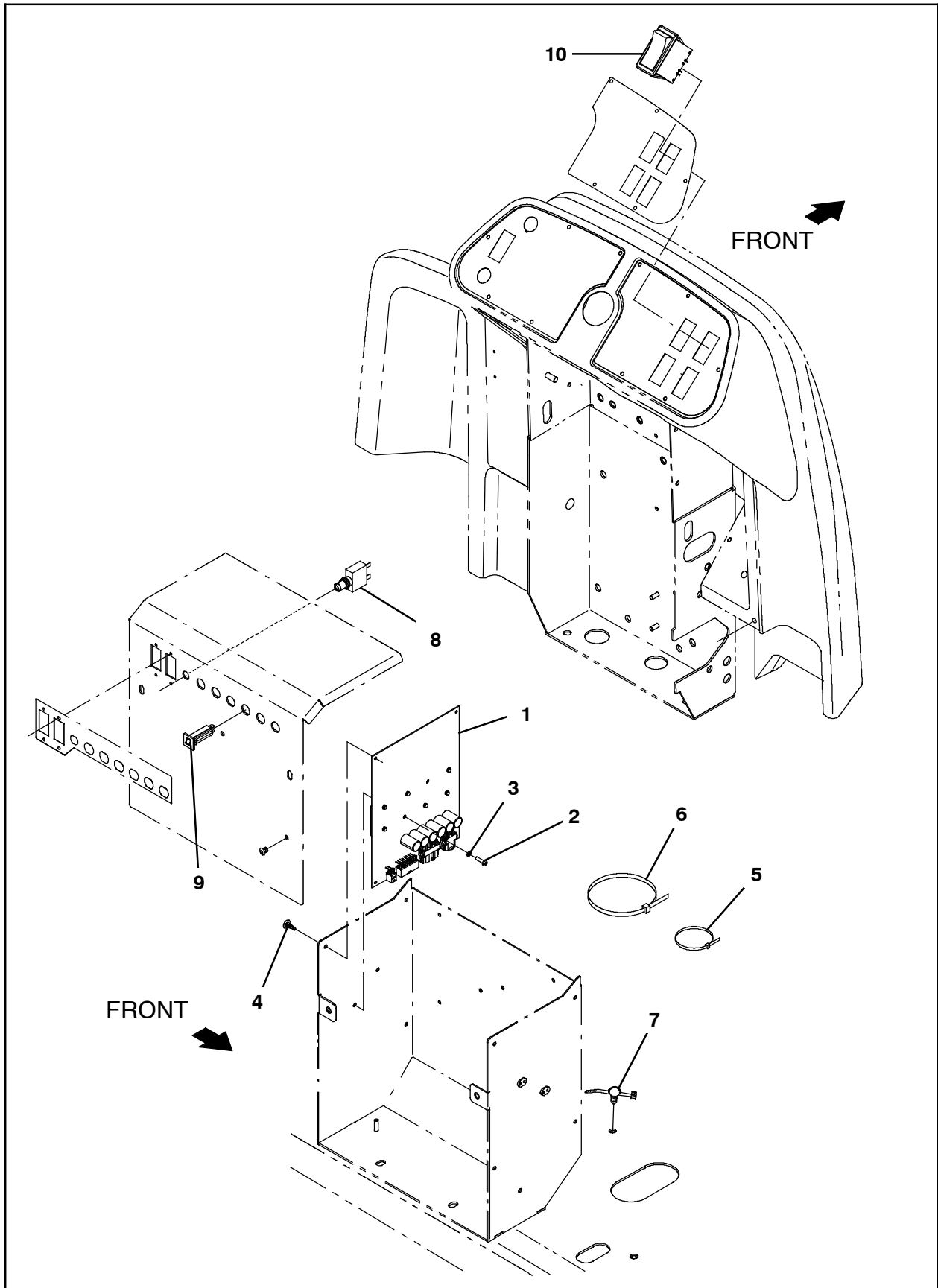


FIG. 5 - Scrubbing Side Brush Electrical Group

FIG. 5 - Scrubbing Side Brush Electrical Group

Ref.	Tennant Part No.	Description	Qty.
1	9020230	Circuit Board Kit, SBA, Afmkt [T17]	1
2	06926	Screw, Pan, Phl, M4 X 0.70 X 10, 4.8	2
3	1202860	Washer, Flat, 0.17b 0.31d .03, Nyl	2
4	1210399	Stand- Off, Circuit Board [0.25"]	4
5	763114	Tie, Cable, 11.3l, 2.75d Max	3
6	222809	Tie, Cable, Nyl, 29.8l .30w 9.0 Max D	1
7	1210807	Wire, Tie [W/.25" Fir Tree Clip]	7
8	383726	Circuit Breaker, 35.0a, Resettable	1
9	1064184	Circuit Breaker, 02.5a, Resettable	1
10	397889	Switch, Rocker, Dpst, On / None / On	1

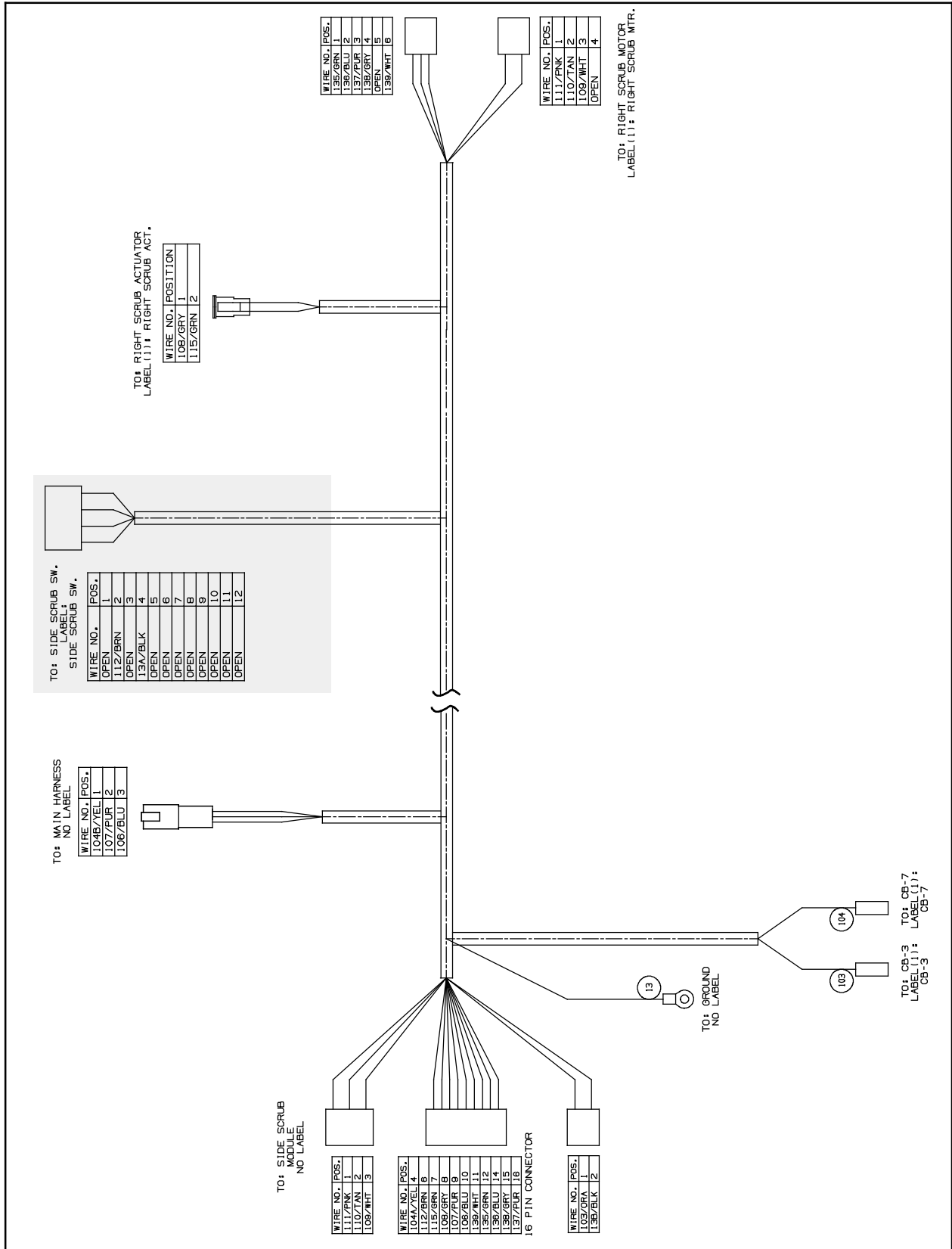


FIG. 6 - Scrubbing Side Brush Wire Harness Group

Ref.	Tennant Part No.	Description	Qty.
1	1072999	Harness, Ele [Side Scrub, T17]	1

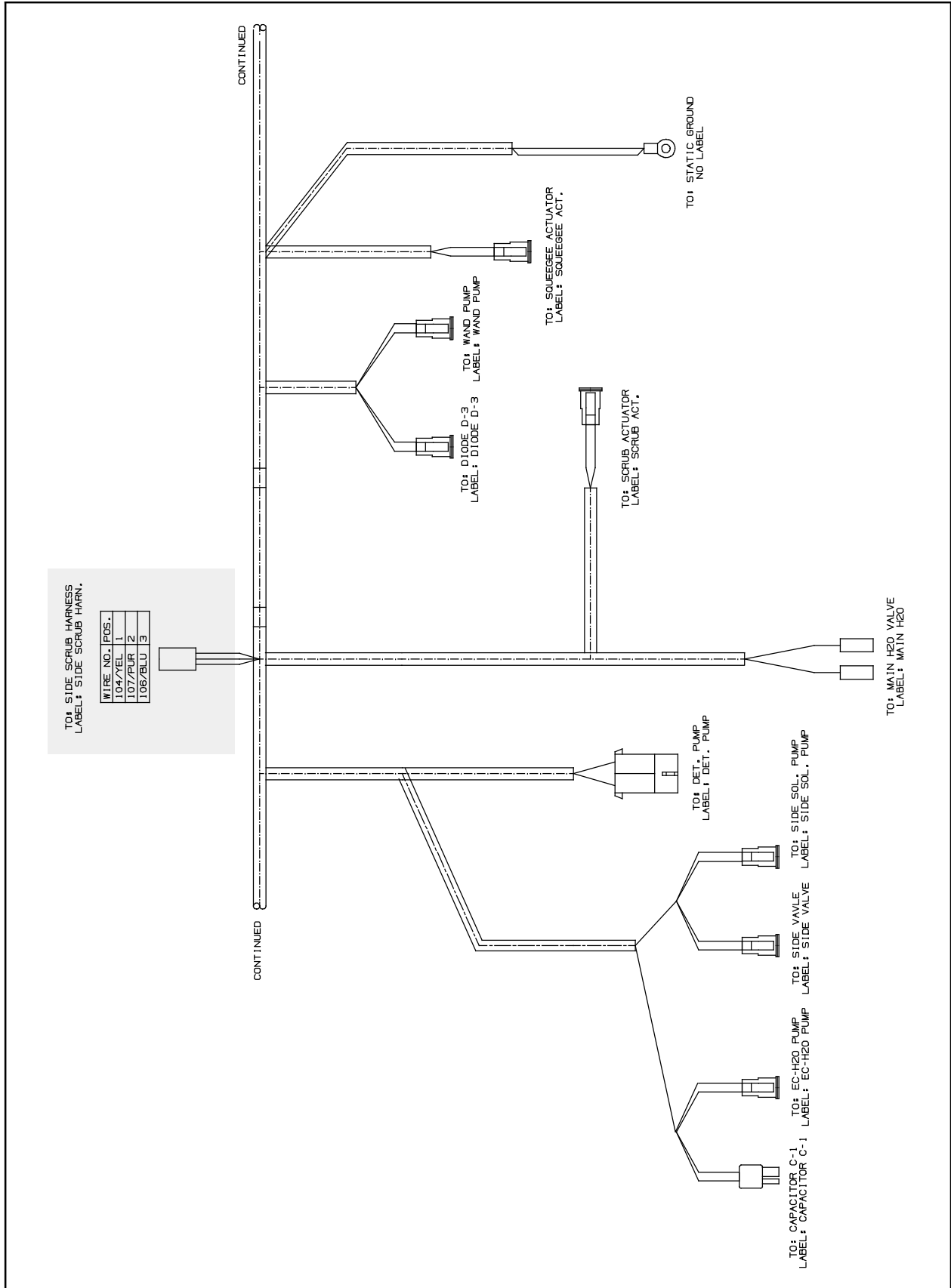


FIG. 7 - Wire Harness Group

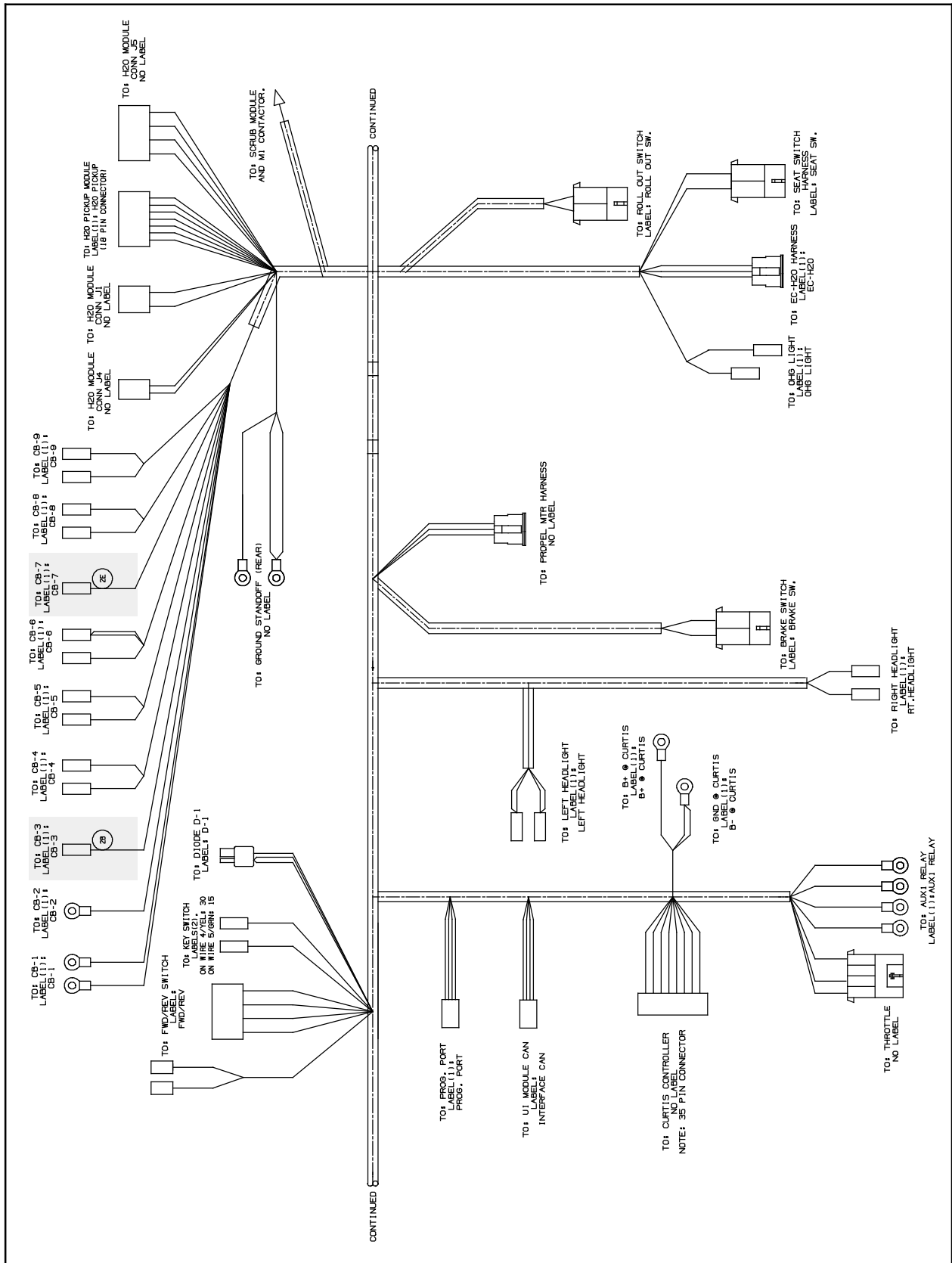


FIG. 8 - Wire Harness Group

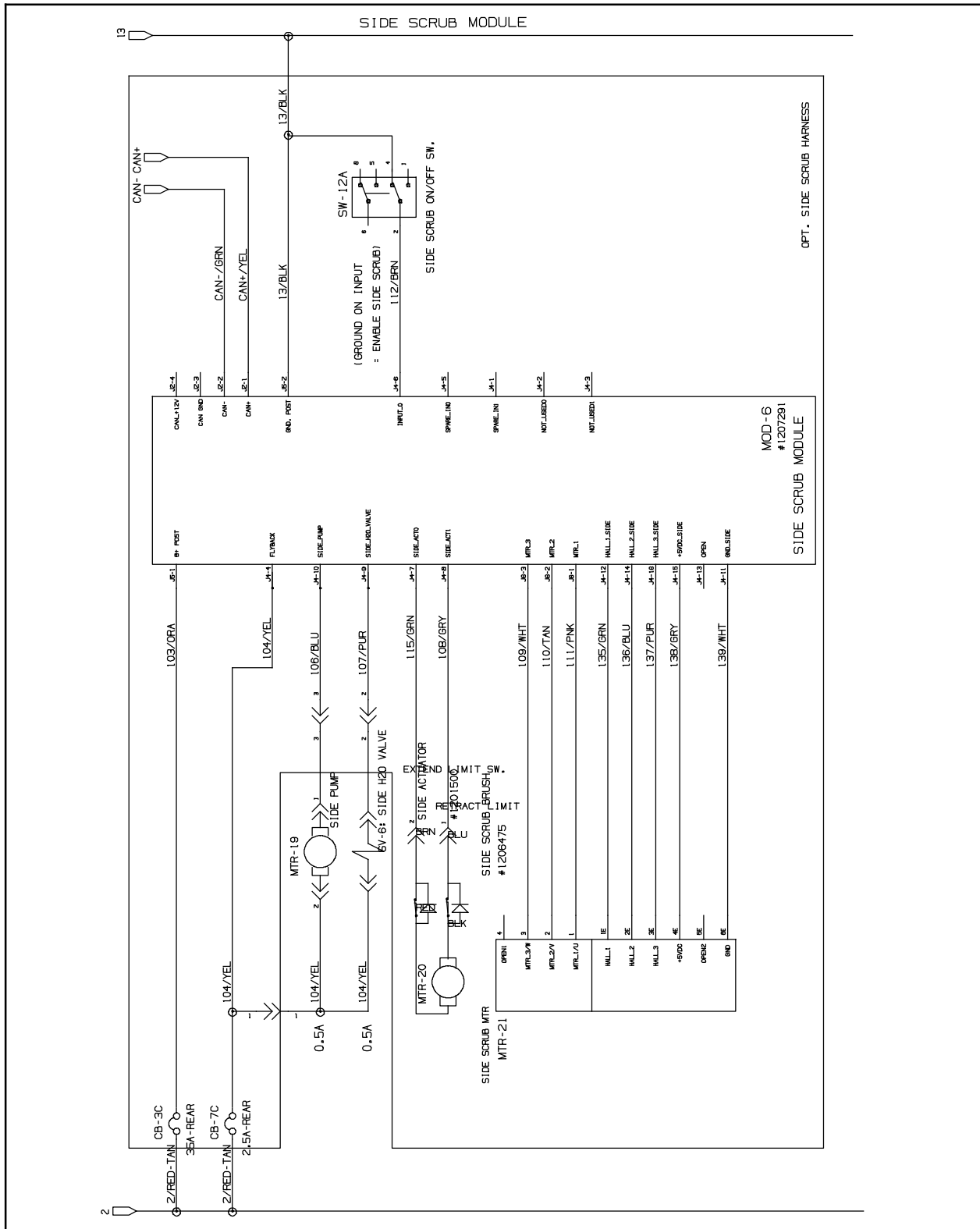


FIG. 9 - Electrical Schematic

TENNANT COMPANY
 P. O. Box 1452
 Minneapolis, MN 55440-1452